

# 1:1 Program: Parent Orientation

---



DISTRICT 300

# What is the Digital Shift?

Over the past several years, District 300 has been steadily increasing access to technology through the development of Smartboards, Chromebooks, iPads, and netbook carts. This technology has allowed students and teachers to explore digital resources and to collaborate through Google apps and other district-supported platforms. The expansion of classroom technology supports our central mission to ensure all students are college or career ready upon graduation.



DISTRICT 300

# What is the Digital Shift?

The shift to a digital environment, however, is not really about devices. Instead, it is about transforming teaching and learning. Increased technology in classrooms allows for differentiated, adaptive, personalized learning.

It is about providing students and teachers with access to resources and technology at their fingertips to facilitate creativity, innovation, collaboration, global awareness, information literacy and media literacy. Students will be able to immerse themselves into a digital-rich environment where there are no limits to their learning. They will be able to immediately access a world of resources to support their individual learning needs.



DISTRICT 300

# Rationale and Benefits

## Rationale

- The nature of information and knowledge is changing
- Students learn differently today
- Education must become about more than just standardized tests
- We live in a digital age, dominated by information, which sees technological advancements happening at an exponential rate
- We must prepare students for their futures, not our past
- Students have a fundamental right to expect an education that reflects these principles (Credit: Leyden 212)



DISTRICT 300

# Rationale and Benefits

## Benefits

- Technology helps students own their own learning
- Technology allows students to access up-to-date information when they need it (i.e. digital textbooks are kept up-to-date)
- Technology allows teachers to see (in real time) how students are learning and where they are in their path toward mastery of content
- Technology allows for easier ways to reach diversity in learning styles
- The digital shift encourages collaboration while honoring the introspective voice
- The digital shift helps teachers prepare students for an increasingly more technology-dependent world
- The digital shift helps teachers develop environments where students stay engaged



DISTRICT 300

# What does it Mean for our Students on a Daily Basis?

## The 1:1 Program

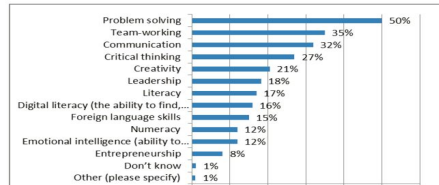
- Allows teachers to analyze (in real time) how students learn and where they are in their path toward content mastery
- Allows for multiple ways to address a diversity of learning styles simultaneously within one class period
- Encourages collaboration while honoring the introspective voice
- Helps teachers develop environments where students stay engaged
- Allows students to access up-to-date information on demand (as digital textbooks are constantly updated)
- Helps students develop their own learning to support the 4Cs



DISTRICT 300

# How does 1:1 tie into College and Career Ready?

Business survey: Which of the following would you say are the most critical skills for employees in your organisation to possess today? Select up to three.

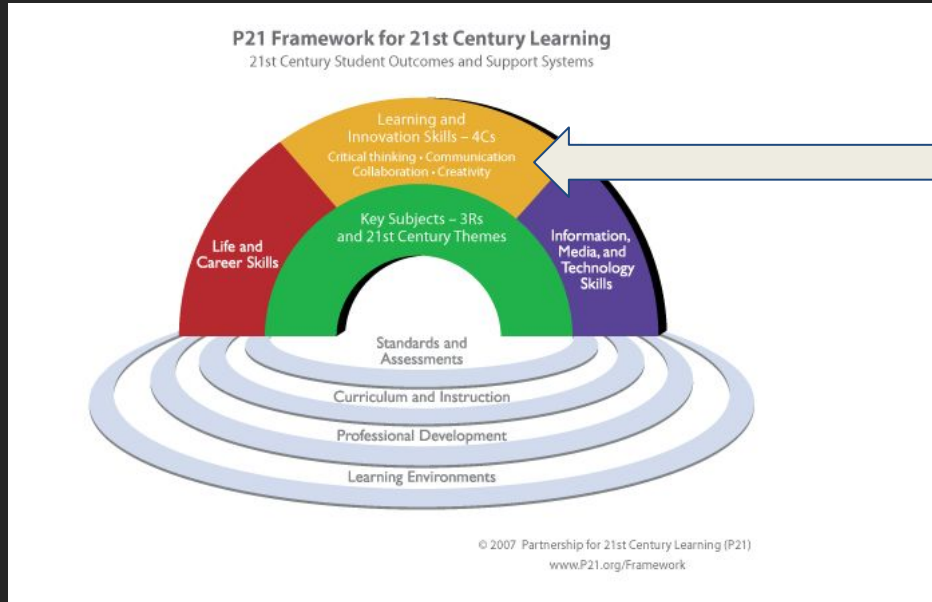


*Business survey: Which of the following would you say are the most critical skills for employees in your organisation to possess today? Select up to three.*



DISTRICT 300

# What does this Mean for our Students on a Daily Basis? 4Cs



## Framework for 21st Century learning

### Learning and Innovation Skills - 4Cs

- Critical Thinking
- Communication
- Collaboration
- Creativity



DISTRICT 300



# What are the 4Cs?



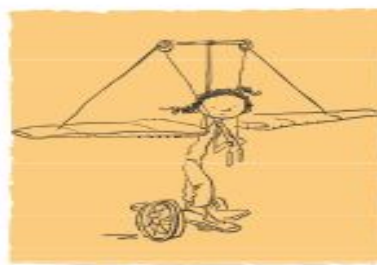
## Communication

Sharing thoughts, questions, ideas, and solutions



## Collaboration

Working together to reach a goal — putting talent, expertise, and smarts to work



## Creativity

Trying new approaches to get things done equals innovation & invention



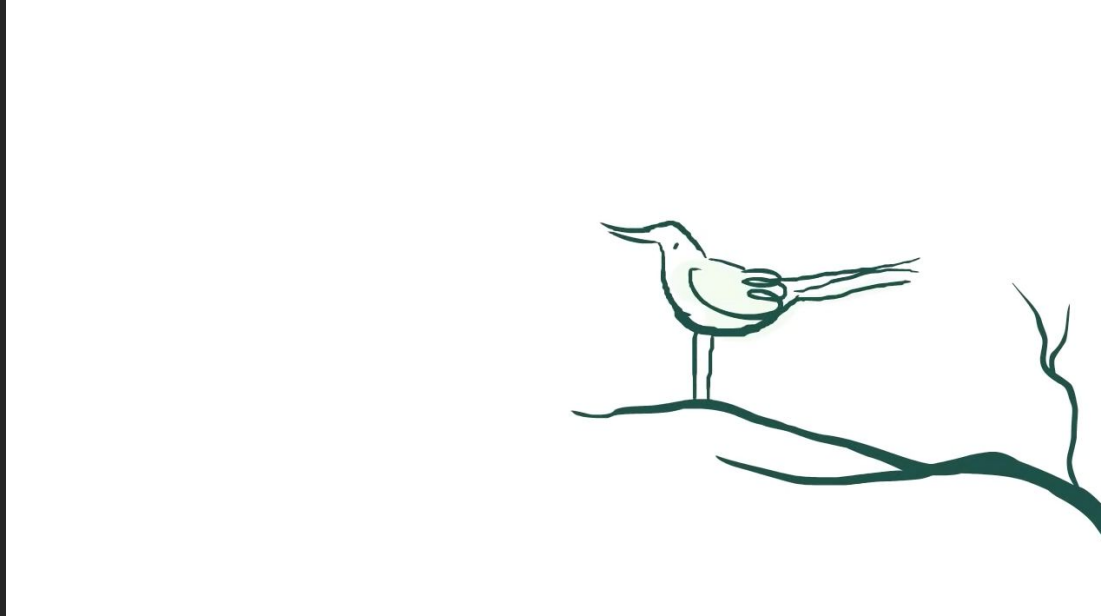
## Critical Thinking

Looking at problems in a new way, linking learning across subjects & disciplines



DISTRICT 300

# What are the 4Cs?



Play video: <https://drive.google.com/a/d300.org/file/d/0B2UAKjVihjd9YVUwSUx2a0drQnc/view>



DISTRICT 300

# What is the 1:1 Program?

***1:1 = 1 device for each student***

The 1:1 Program will equip all D300 1st - 12th grade students with their own computing device by the year 2020.

1st grade through 8th grade students will receive Chromebooks in 2016 as elementary and middle schools transition to digital curriculum that is scaffolded based on grade level needs.

High School device deployment will follow a strategic expansion plan with all District 300 students receiving a computing device by 2020.



DISTRICT 300

# Why Chromebooks?

## Chromebooks were built for creation which supports the 4Cs

- Keyboard is built-in and provides a more robust typing environment
- Speed - Chromebooks boot up in less than 8 seconds and connect to the internet
- Ease of replacement - Since chromebooks are internet based, if the actual device is lost, information is not lost
- Skill sets are applicable across different platforms - Chromebooks allow students to access web based programs reinforcing skill sets and not particular tools



DISTRICT 300

# Questions?



DISTRICT 300

# How will the Chromebook be used in the Classroom?

During the initial deployment year (2016-17) Chromebooks will be utilized to access the following web-based tools:

- McGraw Hill Wonders/Study Sync or Reading Street
- Google Drive/Docs
- Haiku Learning Management System (LMS)

Each of these tools are explained in detail in the following slides

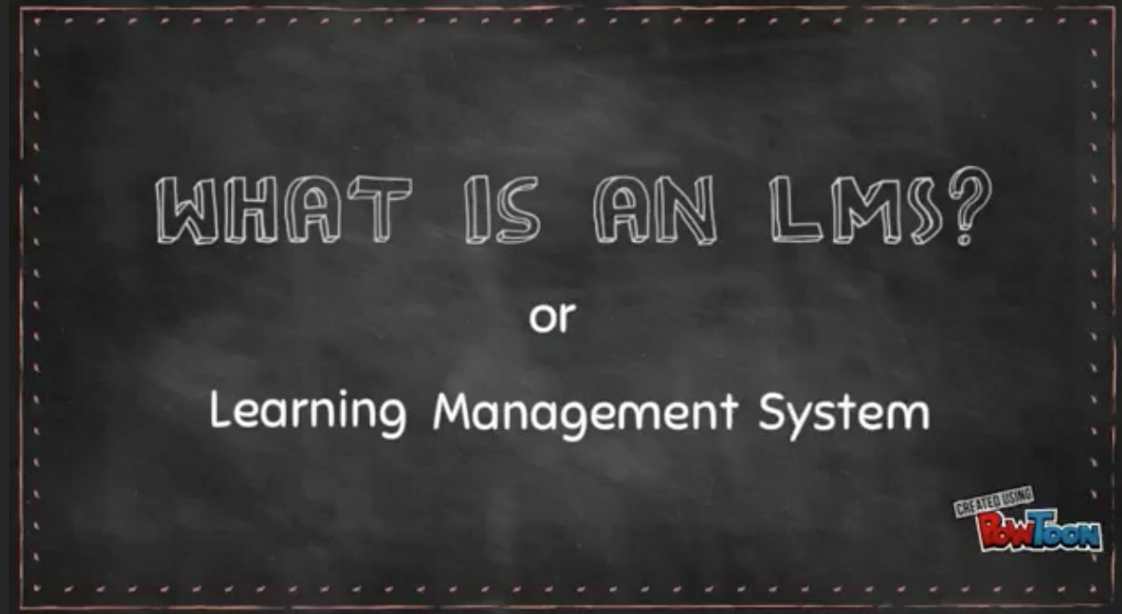


DISTRICT 300

# How will they be used in the Classroom? (cont)

## Haiku Learning Management System

What is a Learning Management System? (LMS)



DISTRICT 300

# What is Haiku LMS?

A secure, learning management system that emphasizes content, creativity, and community. Teachers can create Haiku websites for each of their classes and can post information including assignments, quizzes, grades, and multi-media resources. Students and their parents will have access to that information as well as many other interactive features.

The interactive features of the system including class discussion, assignments, assessments, digital media, wikiprojects, polls, and more are available to teachers and students. These features enhance and support instructional goals, student involvement and collaboration. Haiku LMS can extend the boundaries of classrooms into the home and community, while providing a safe and secure environment for learning.



DISTRICT 300



# Why do we need an LMS?

## Learning Management System (Haiku)

- Content delivery
- Interactive features
- Class assignments
- Discussion boards
- Student-teacher communication
- Assessments

## Student Information System (Infinite Campus)

- Attendance
- Behavior
- Transportation
- Special Ed documents
- Class schedules
- Report cards



DISTRICT 300

# How will they be used in the Classroom? (cont.)

## Haiku Learning Management System

D300 is utilizing Haiku LMS ([www.haikulearning.com](http://www.haikulearning.com)) as it is specifically designed for K-12 audiences

- User account and password protected
- Allows teachers to create an online space for interactive learning
- Discussions
  - Emails
  - Collaborative assignments
  - Tracking of assignments and their due dates



DISTRICT 300

# How will they be used in the Classroom? (cont.)

## McGraw Hill Wonders/Reading Street

- D300 adopted McGraw Hill digital curriculum materials for 2016-2017
  - K-5 *Wonders*
  - 6-8 *Study Sync*
  - *Golfview, Parkview, Lakewood, Perry, and Meadowdale will continue to use Reading Street*
- Curriculum materials align to IL Learning Standards and provide on grade level and differentiated texts and activities/tasks
- Supports a balanced literacy approach and comprehensively integrates reading, writing, listening, and speaking at all levels
- Assessments (both formative and summative) align to the learning targets for each unit
- Provides teachers specificity regarding curricular scope and sequence, pacing, differentiation, learning activities, and assessment



DISTRICT 300

# How will they be used in the Classroom? (cont.)

## Google Apps for Education

Google Apps for Education is a core suite of tools designed for productivity and collaboration

- Docs (word processing, spreadsheets, powerpoint, calendars, etc.)
  - K-5 will NOT have email functionality in Google
- Documents and emails may only be shared with other students/staff who have D300 email addresses
- Governed by GAFE privacy policies: (<https://www.google.com/edu/trust>)
- Google documents may be used offline if no internet access is available



DISTRICT 300

# Questions?



DISTRICT 300

# What will my Student Receive?

## 1st - 2nd grade

- Students will be assigned an ASUS C202 Chromebook to use at school
  - 11.5 inch screen
- Chromebooks will remain at school and be charged in a cart in the classroom

## 3rd - 8th grade

- Students will be assigned an ASUS C202 Chromebook to use at school
- Charger (to be left at home)
- A Maroo Chromebook case with external pockets and adjustable shoulder strap



DISTRICT 300

# When are Chromebooks distributed? When will the Chromebooks come home?

1st - 8th grade students will receive their Chromebooks during the first week of school

3rd - 8th grade students will begin bringing Chromebooks home the beginning of 2nd quarter

- This is typically a staggered release to ensure students (and parents) understand how to use the devices at home

1st and 2nd grade students will not bring Chromebooks home



DISTRICT 300

# Insurance

**The \$40 Technology Fee provides insurance for the device.**

If a device is covered under manufacturer warranty, there is no charge

**If a device is broken and is not covered under warranty the following fines are charged:**

1st incident of accidental damage = \$25

2nd incident of accidental damage = \$50

3rd incident of accidental damage = \$75

4th incident of accidental damage = Full Replacement Cost

**Chargers and Cases are not covered under the device insurance**

Charger replacement is \$11.50

Case replacement is \$22.10



DISTRICT 300



# What Happens if my Student has a Problem with the Device during the School Day?

During the 1st quarter of school, students and teachers will work on how to use the Chromebook and how to troubleshoot minor issues

These lessons will be provided in Haiku

If a device is not working and the student and/or teacher do not know how to fix it, the student can go to the media center to receive a replacement device



DISTRICT 300

# How will Chromebooks be used at Home?

- Students can connect to WiFi at home, Library, or public areas
- Students can access their Haiku portal, along with Wonders/Reading Street/Study Sync, Google Apps with their username/password
- Google docs will work offline
- Filtering both at school and at home



DISTRICT 300

# Web Filtering

- The district has implemented a content filtering system to block inappropriate content (ie: web pages, material, etc.)
- The content filtering is applied to the device so your student cannot remove it
  - Only District 300 accounts can sign into the Chromebooks
- The filtering will work at school and at home in the same capacity
- Since the internet is dynamic and new websites are constantly being added, our content filtering system actively scans for new content and adds it to the filtering



DISTRICT 300

# Questions?



DISTRICT 300

# How Can Parents Help Students

- Parent Universities will be offered in the fall
  - They will coincide with students bringing devices home
  - They will teach parents how to use Haiku
  - Parent Universities are not mandatory
- Online portal will have visual tutorials available



DISTRICT 300

# Parent Access

In Haiku, parents have increased access to their child's education.

Parents will have access to their student's learning materials, including reading materials and homework

Parents will not have access to sensitive information, including tests and quizzes



DISTRICT 300

# Parent Haiku Demonstration



DISTRICT 300

# Paperwork Sign Off



DISTRICT 300